

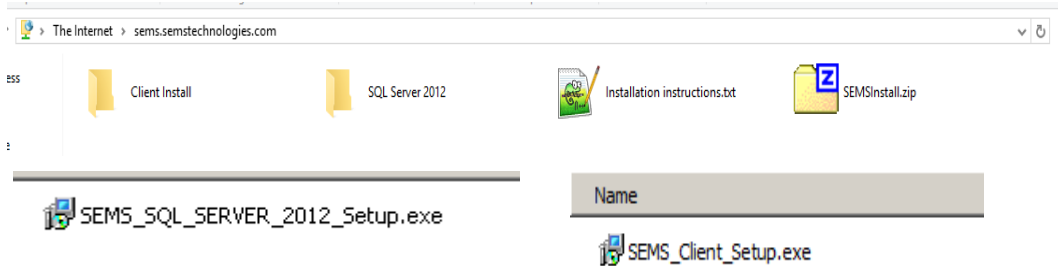
SEMS SOFTWARE SUITE INSTALLATION

WHERE TO DOWNLOAD THE INSTALLERS

SEMS SOFTWARE SUITE INSTALLATION INFORMATION

Getting Started [FTP Link](#)

The installation files can be downloaded from our FTP site. The client installer and SQL installer are in their respective folders. The SEMSInstall.zip file contains both installs.



- SQL Server Express install
 - As of August 2015 the version of SQL Express for our install is 2012
 - All SEMS default names and passwords are filled in throughout the install. However, you can change these as needed
- Included is a tool to restore a backup database
- SEMS Software installer
 - You must have database login credentials
 - Retrieves the latest install each time it is run

If you wish to install SEMS using an existing SQL server you can do so. Please setup a new database on that SQL server with the following:

- Database Name: SEMS
- Database User Login: SEMS
- Database Login Password: SEMS

These are the defaults that are used by SEMS; you are free to change them if you require. Also, please make sure that your SQL instance is in Mixed mode to allow for the connection with the SEMS Login

Jump to

[SQL Express Install](#)

[SEMS Client Install](#)

SEMS SOFTWARE SUITE INSTALLATION

SQL SERVER 2012 INSTALLATION

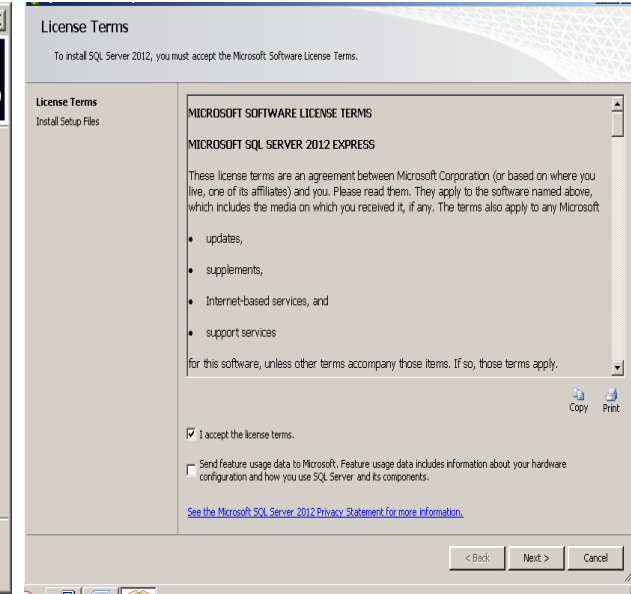
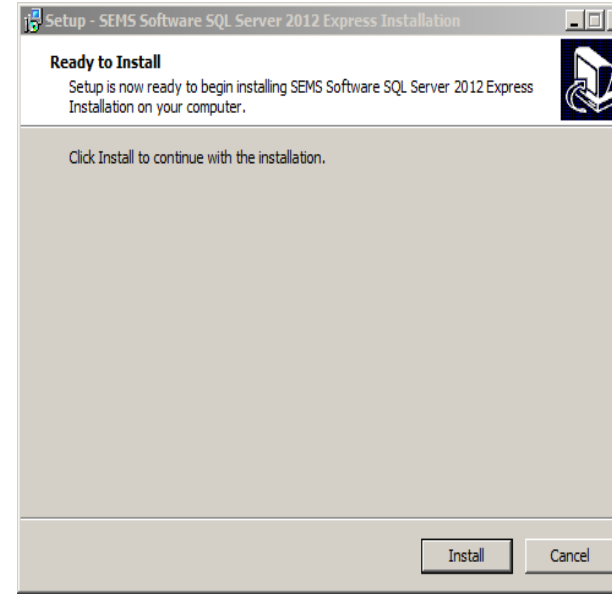
SQL EXPRESS INSTALL

Ready to Install

This page comes first. Click Install to continue. Click Cancel if you have opened more than one copy of the installer or have run it unintentionally.

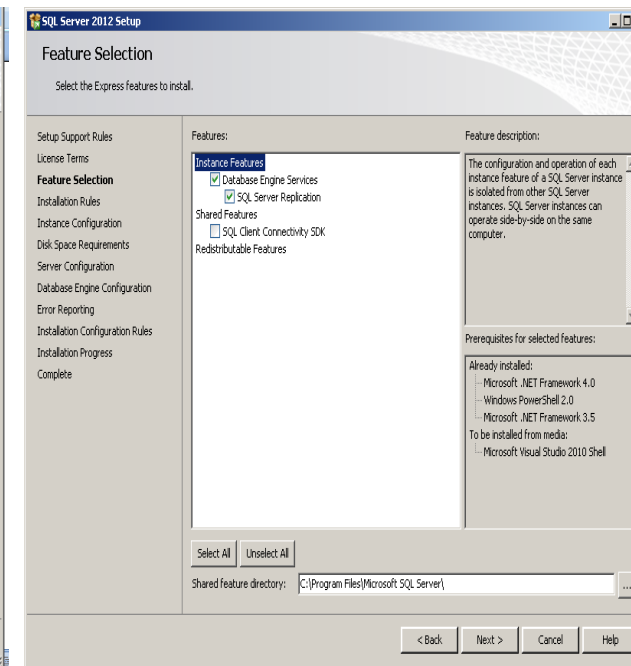
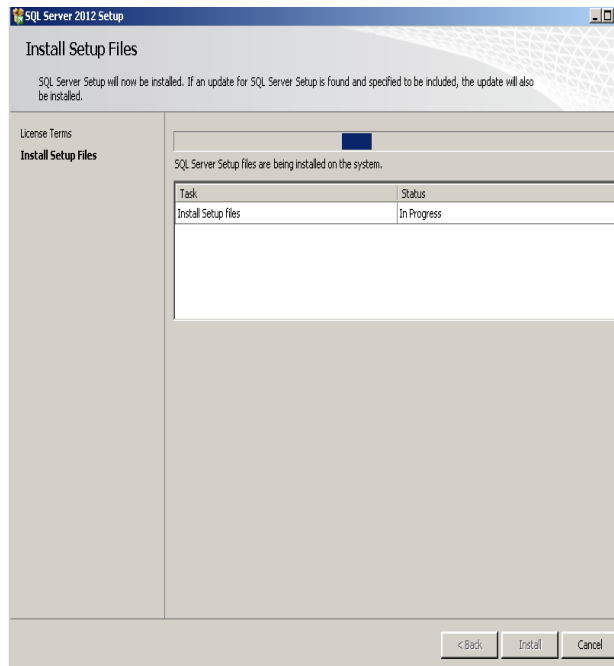
This will start the Microsoft SQL Express installer that will check the system to make sure all prerequisites are met for the installation of SQL 2012 Express. Once that is finished the Microsoft EULA is displayed.

You must accept the terms to continue



Install Setup Files

Next, SQL will begin its install process by copying files needed for the install



Features Selection

Once that has finished you will be able to pick the directory to install to, or use the default location set for your Windows Program Files directory.

SQL EXPRESS INSTALL

Instance Configuration

Allows you to modify the name of the SQL instance you are installing. We use the default of SEMS which is automatically filled in for you

Server Configuration

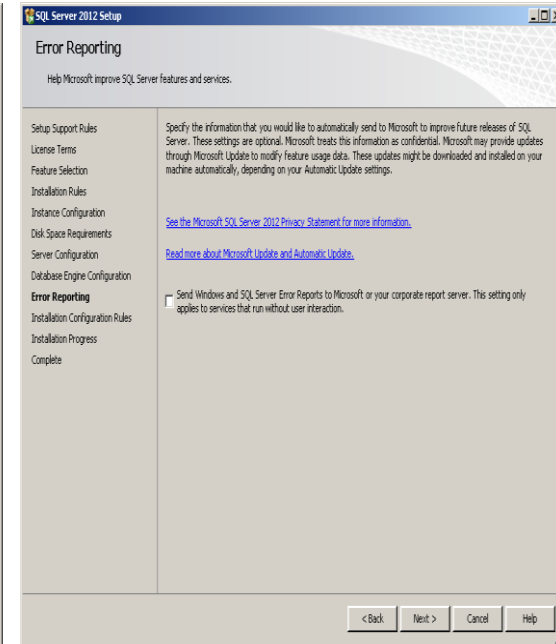
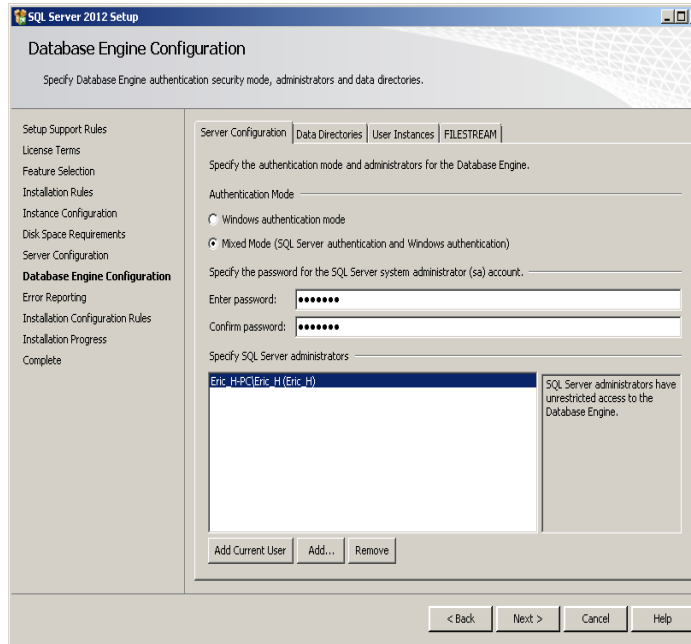
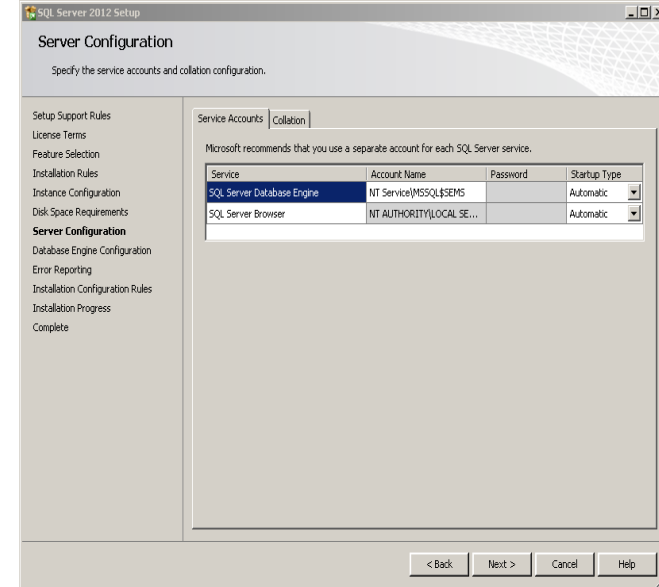
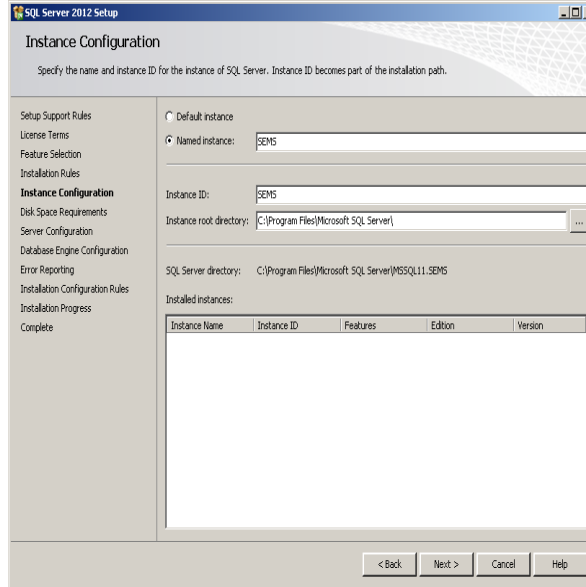
Allows you to configure the startup of services that SQL uses. It is important to allow both the services on this page to automatically start. This is preconfigured for you

Database Engine Configuration

Allows you to change the password for the SQL sa user (This is the admin user for SQL connections and configurations)

Error Reporting

Should you decide to let Microsoft collect error information, please enable the checkbox. This is disabled by default



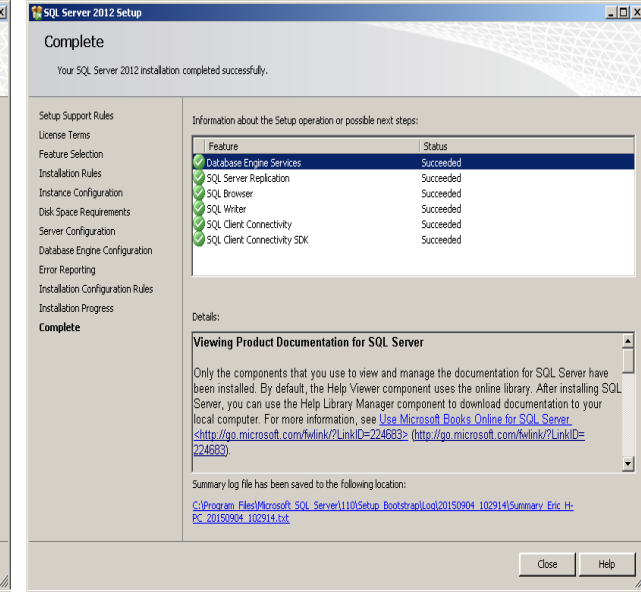
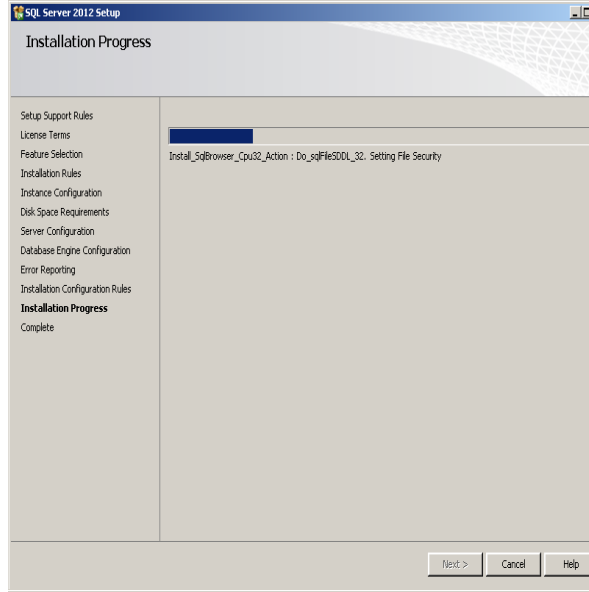
SQL EXPRESS INSTALL

Installation Progress

The SQL install will now take the configured settings and install the server and instance services

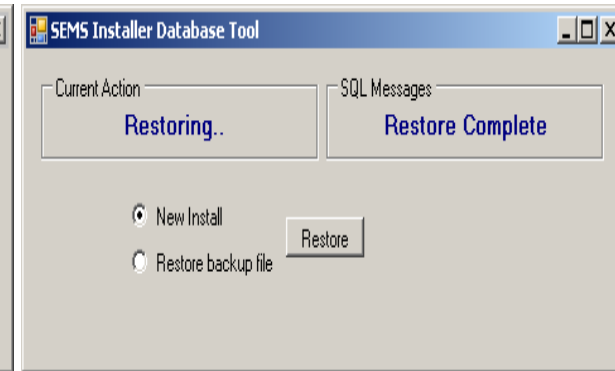
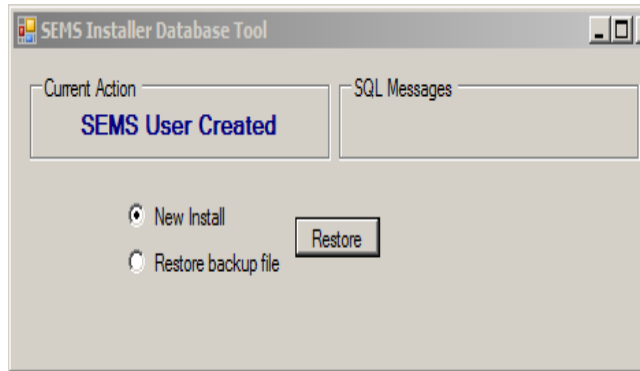
Complete

This page will notify you that the installation of SQL Express has been installed successfully, or present you with any issues it found during the installation process



SEMS Installer Database Tool

After SQL Server Express is finished installing, this tool will create the default SEMS user. With **New Install** selected, click Restore to use a fresh SEMS database. If you have a database that has been prepared for you, select **Restore backup file**. This will give you the option to select a backup file and then click Restore to add that data to your newly installed SQL Server



SEMS SOFTWARE SUITE INSTALLATION

SEMS CLIENT
INSTALL

SEMS SOFTWARE SUITE CLIENT INSTALL

Runtime Command Window

This black command window is gathering a list of available SQL instances the application can see to populate the server selection list used below

License Agreement

This is the SEMS Technologies, LLC EULA. Please read and accept the agreement to continue

Connect to Database Server

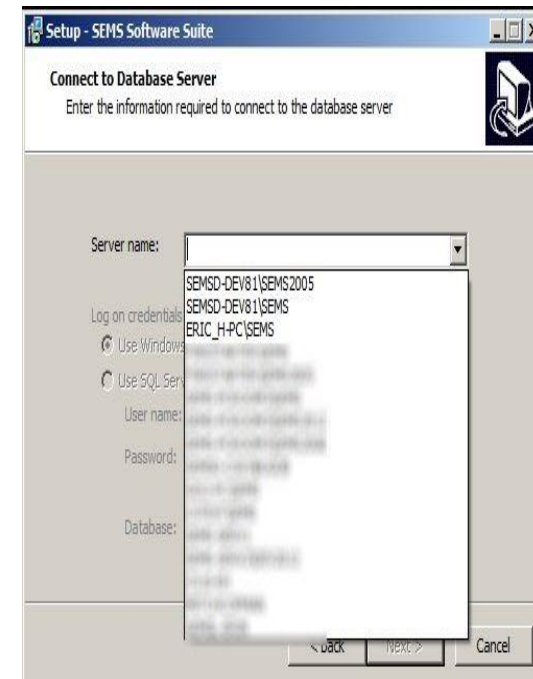
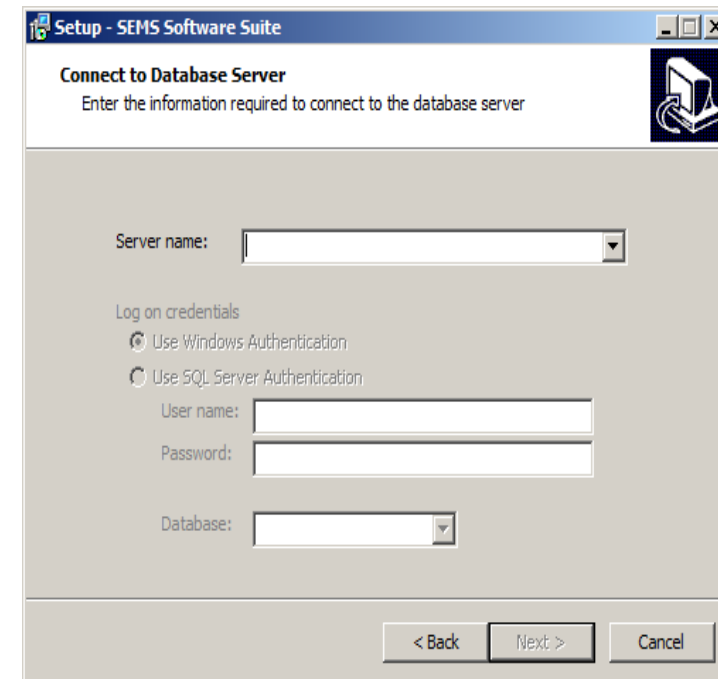
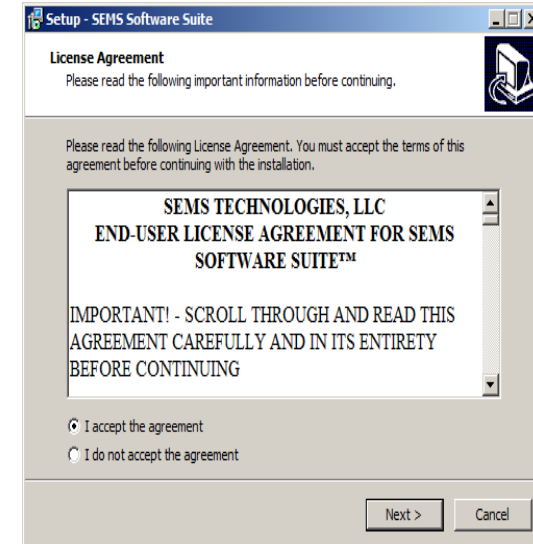
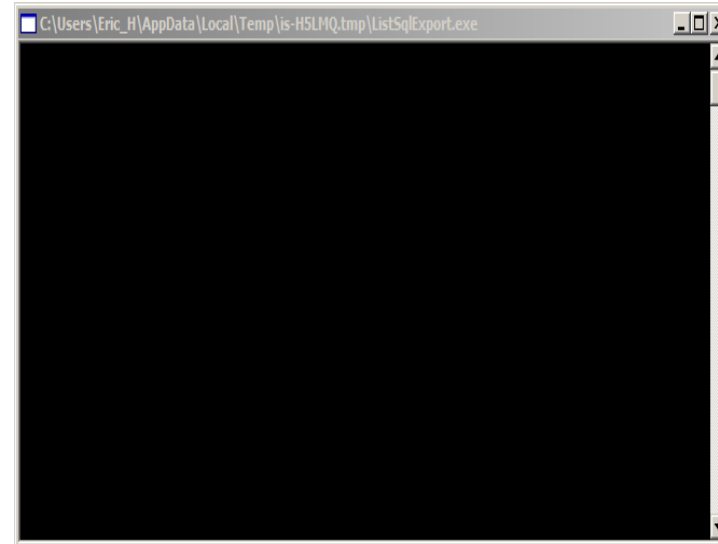
Server Name – Click the down arrow to see the list of available SQL Servers, then select the one you wish to use.

Log on credentials – To use defaults, select Use SQL Server Authentication.

User Name: SEMS

Password: SEMS

Database – Click the down arrow to select the SEMS database from the list



SEMS SOFTWARE SUITE CLIENT INSTALL

Select Destination Location

Changing the location on this page will change where the SEMS application is installed. Install locations cannot reside on a network drive.

Select Start Menu Folder

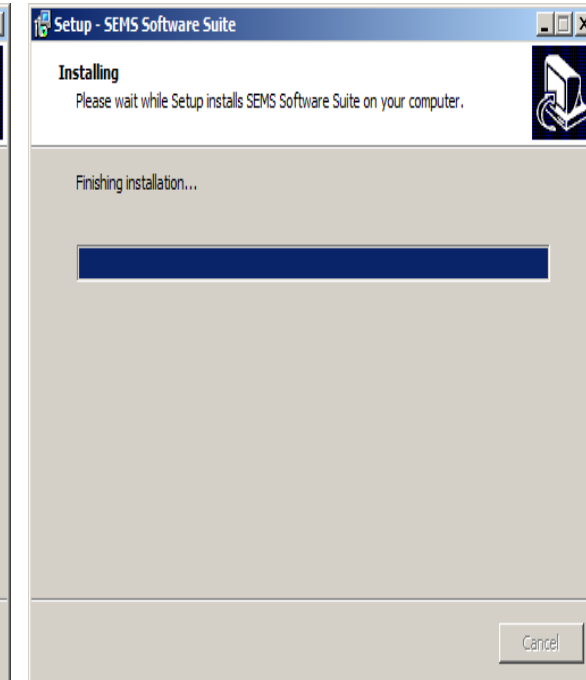
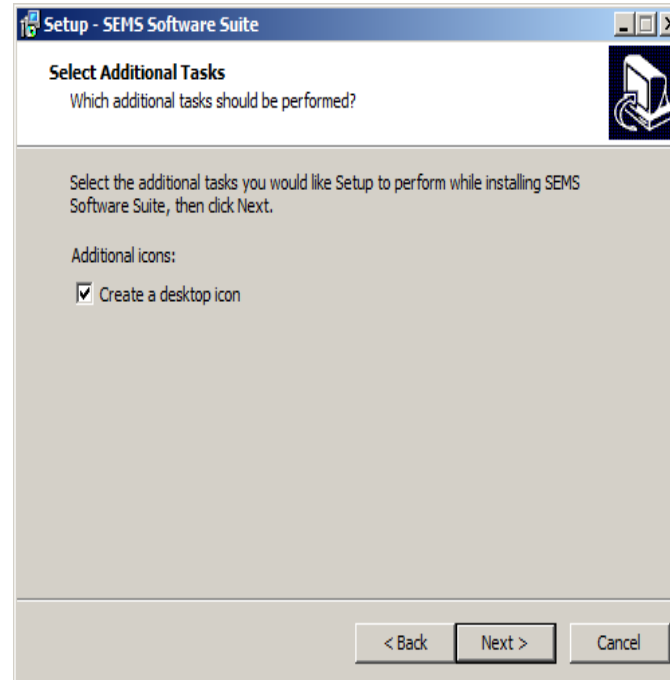
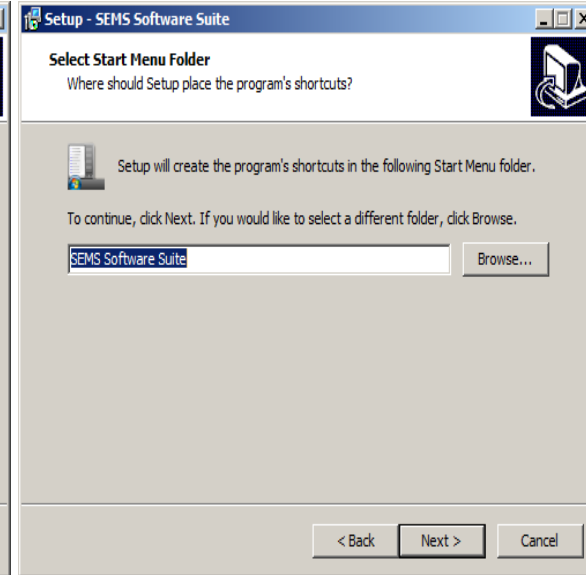
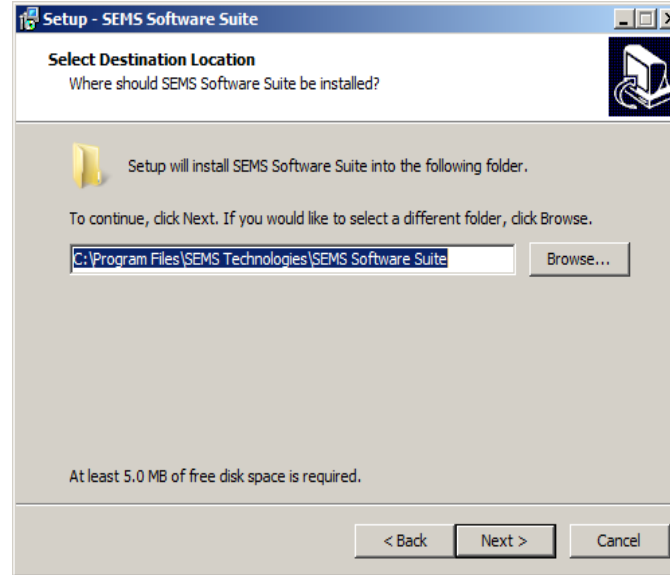
Changing this information allows you to place the SEMS shortcuts into other folders on your start menu

Select Additional Tasks

Give you the option to create a desktop shortcut to SEMS Software Suite

Installing

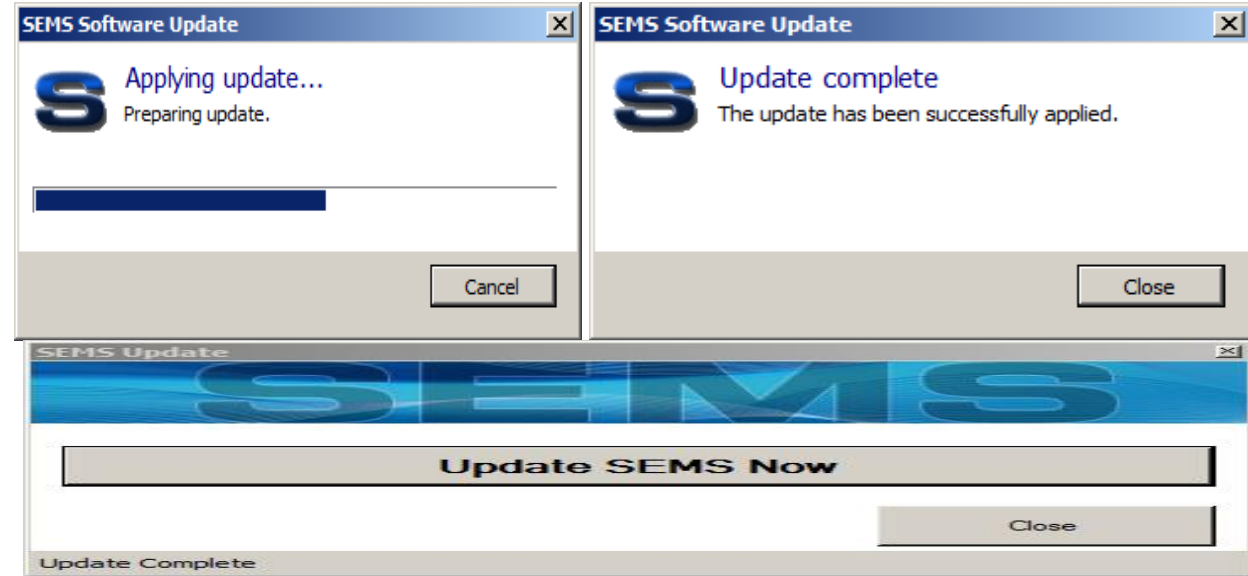
This finalizes your choices and launches our Online Installer / Updater



SEMS SOFTWARE SUITE CLIENT INSTALL

SEMS Software Update

This tool will download the most current version of SEMS to the directory specified earlier in the install. There will be two parts that are downloaded and installed. Within a few seconds the application of the second part will begin. Once you see the Update Complete message, click Close.



Problems or Questions?

If you are experiencing issues with the installer or have questions please email support@SEMSTech.com or contact us in the office at

Office Hours: Monday – Friday, 8:30am – 5:30pm Eastern

Phone Numbers: (678)845-0243, (866)758-6582